

WEST YORKSHIRE SPINNERS



Sweetheart

— Raglan Dress —

DESIGNED BY SARAH HATTON



General Information

It is essential to work to the stated tension to ensure success and you should always start by knitting a tension square before knitting the full garment.

If you have too many stitches to stated tension, your tension is too tight and you should change to a larger needle. If there are too few stitches, your tension is too loose and you should change to a smaller needle. Please check individual patterns for tension before starting the garment.

Instructions given are for the 1st size, with larger sizes in brackets. Where only one figure or instruction is given, this applies to all sizes. Work all directions inside brackets to the number of times stated.



Abbreviations

alt	alternate	P	purl
beg	beginning	patt	pattern
cm	centimetres	pm	place marker
cont	continue	psso	pass slipped stitch over
dec	decrease(ing)	rep	repeat
foll	following	rem	remain(ing)
g st	garter stitch	RH	right hand
g	grammes	RS	right side
in	inch(es)	st(s)	stitch(es)
inc	increase(ing)	st st	stocking stitch
K	knit	sm	slip marker
kfb	knit into front and back	sl1	slip one stitch knitways
LH	left hand	tog	together
meas	measures	tbl	through back of loops
m1(p)	pick up loop between last and next st and work into the back of this loop	WS	wrong side
		wyif	with yarn in front
		yfrn	yarn forward and round needle
		yo	yarn forward and over needle

Sizing

* The sizing chart is given as a guide only.

To Fit Chest (approximately)

cm	32	42	48	51	52	55	56
Age	4lbs (Premature)	7lbs (Newborn)	0-3mo	3-6mo	6-9mo	9-12mo	12-18mo

*West Yorkshire Spinners cannot be held liable for any garments not fitting correctly. mo = months

Sweetheart

— Raglan Dress —

MEASUREMENTS

To Fit					
size	0-3mo	3-6mo	6-9mo	9-12mo	12-18mo
Actual Width (laid flat)					
cm	24	26	27	28.5	30
Full Length					
cm	30	32	35	37	39

YARN

West Yorkshire Spinners - Bo Peep 4 Ply
Lollipop (867) 2 [2:2:3:3] x 50g

MATERIALS

1 Pair 2.75mm (US 2/UK 12) knitting needles
1 Pair 3.25mm (US 3/UK 10) knitting needles
Stitch holders

Optional

1 x 2.75mm (US 2/UK 12) circular needle
1 x 3.25mm (US 3/UK 10) circular needle

TENSION

28 sts and 36 rows to 10cm measured over st st on larger needles or size needed to achieve stated tension.

VERY IMPORTANT - IT IS ESSENTIAL TO WORK TO THE STATED TENSION TO ENSURE SUCCESS.

SPECIAL ABBREVIATIONS

kfb knit into front and back of next st
pm place marker
sm slip marker



DESCRIPTION

A CUTE RAGLAN DRESS KNITTED FROM THE TOP DOWN ON STRAIGHT NEEDLES.

SIZES 0-3 TO 12-18 MONTHS

SKILL LEVEL



RAGLAN DRESS



BODY

(Worked in one piece from neck down)

Using 2.75mm needles cast on 90 [94:94:102:102] sts.

Next row: K20 [20:20:22:22] for sleeve, pm, k25 [27:27:29:29] for front, pm, k19 [19:19:21:21] for sleeve, pm, k26 [28:28:30:30] for back.

Knit 1 row.

Working in garter stitch throughout, cont as folls:-

If it becomes difficult to fit all your sts on the needle, please change to a circular needle.

Row 1 (RS): K1, kfb, * knit to 2 st before marker, kfb, k1, sm, kfb, rep from * to 2 sts before last marker, kfb, k1, sm, kfb, knit to last 3 sts, kfb, k2. (Increase on body and sleeves, 98 [102:102:110:110] sts)

Work 3 rows.

Rep these 4 rows 1 [0:3:3:4] times. 106 [102:126:134:142] sts.

Cont as folls:-

Row 1 (RS): K1, kfb, * knit to 2 st before marker, kfb, k1, sm, kfb, rep from * to 2 sts before last marker, kfb, k1, sm, kfb, knit to last 3 sts, kfb, k2. (Increase on body and sleeves, 114 [110:134:142:150] sts)

Work 1 row.

Row 3: Knit to 1st marker, sm, kfb, knit to 2 sts before 2nd marker, kfb, k1, sm, knit to 3rd marker, sm, kfb, knit to last 3 sts, kfb, k2. (Increase on body only, 118 [114:138:146:154] sts)

Work 1 row.

Rep these 4 rows 3 [4:3:4:4] times. 154 [162:174:194:202] sts.

Cont as folls:-

Row 1 (RS): K1, kfb, * knit to 2 st before marker, kfb, k1, sm, kfb, rep from * to 2 sts before last marker, kfb, k1, sm, kfb, knit to last 3 sts, kfb, k2. (Increase on body and sleeves, 162 [170:182:202:210] sts)

Work 1 row.

Rep these 2 rows 6 [7:6:5:6] times. 210 [226:230:242:258] sts. (left sleeve - 46 [48:50:52:56] sts, front - 59 [65:65:69:73] sts, right sleeve - 45 [47:49:51:55] sts, back - 60 [66:66:70:74] sts)

Next row (RS): Cast off 46 [48:50:52:56] sts (1 st left on needle) slip this st back to LH needle, cast on 8 [8:10:10:10] sts and knit across these sts (depending on which cast on method you use you may need to turn your work to do this), k59 [65:65:69:73], cast off 45 [47:49:51:55] sts (1 st left on needle), slip this st back to LH needle, cast on 8 [8:10:10:10] sts and knit across these sts, k60 [66:66:70:74]. 135 [147:151:159:167] sts.

Work in g st until work meas 3cm from cast on sts, ending with RS facing for next row.

Next row: K15 [5:2:10:8], *kfb, k14 [8:6:5:5], rep from * to last 0 [7:2:11:9] sts, kfb 0 [1:1:1:1] time, k0 [6:1:10:8]. 143 [163:173:183:193] sts.

Knit 1 row.

Shape skirt

Change to 3.25mm needles and cont as folls:-

Row 1 (RS): Knit.

Row 2: P3, * k2, p3, rep from * to end.

Rep these 2 rows 1 [1:1:2:2] times more.

Next row: K3, *kfb, k9, rep from * to end. 157 [179:190:201:212] sts.

Next row (WS): *P3, k2, p3, k3, rep from * to last 3 sts, p3.

Next row: Knit.

Rep these 2 rows twice more, then first row once more, ending with RS facing for next row.

Next row: K3, * k6, kfb, k4, rep from * to end. 171 [195:207:219:231] sts.

Next row: * P3, k3, rep from * to last 3 sts, p3.

Next row: Knit.

These 2 rows set patt.

Cont in patt as set until skirt section meas 16 [17.5:19:20.5:21.5]cm, ending with RS facing for next row.

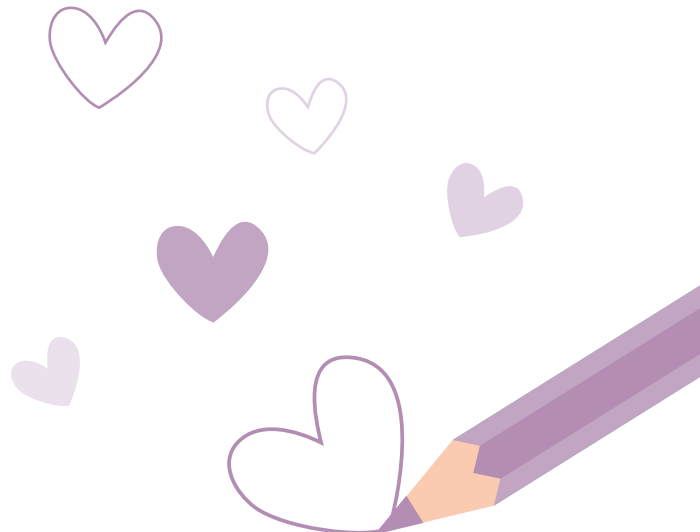
Knit 5 rows.

Cast off knitways on WS.

MAKING UP

Join right back raglan seam. Join side seam.

See ball band for care instructions.





Disclaimer

Please note that all quantities are based on average usage and therefore are approximate.

We cannot accept responsibility for the finished garment if any other yarn than the one specified is used.

Although every effort had been made to ensure that instructions are correct, West Yorkshire Spinners cannot accept any liabilities.

Owing to photography and printing restrictions the colour reproduction is matched as closely as possible to the yarn.

For more information contact us

West Yorkshire Spinners

Unit 2, Airedale Park,
Royd Ings Avenue,
Keighley, West Yorkshire
BD21 4DG

Tel: (0)1535 664500
sales@wyspinners.com
www.wyspinners.com

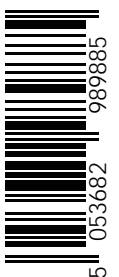




WEST YORKSHIRE SPINNERS

+44 (0)1535 664500 | sales@wyspinners.com | www.wyspinners.com

Made in Yorkshire, West Yorkshire Spinners. Keighley, England



DBP002Z